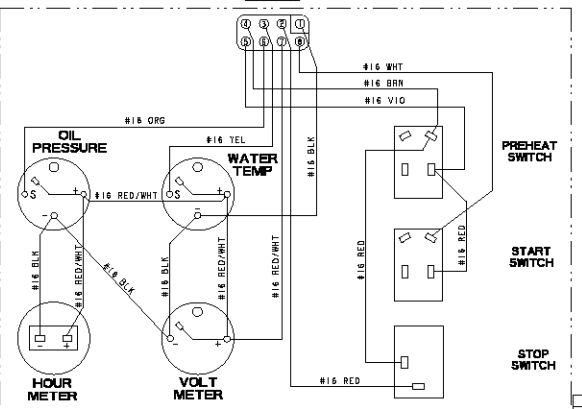
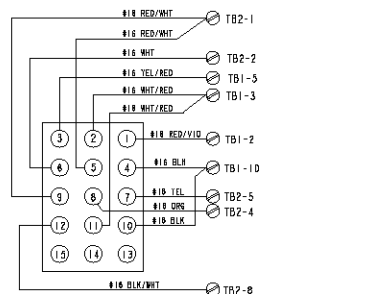


NOTE:  
 1. REMOVE JUMPER WHEN CONNECTING A SECOND REMOTE PANEL.  
 2. GROUND "1" TERMINAL OF PREHEAT SOLENOID ON 24V SYSTEM ONLY.



**INSTRUMENT PANEL**

NOTE:  
 ○ REMOTE CONNECTOR PINS

TOLERANCES (UNLESS OTHERWISE NOTED)		WESTERBEKE CORPORATION AVON, MA. 02322	
FRACTIONAL	DECIMAL EQUIVALENT	STANDARD	WIRING DIAGRAM/SCHEMATIC, 32.0 BEDAR - SRC
1/16	0.0625	DATE	REV
1/8	0.125	APPROVED BY	DATE
3/16	0.1875	DATE	REV
1/4	0.25	DATE	REV
5/16	0.3125	DATE	REV
3/8	0.375	DATE	REV
7/16	0.4375	DATE	REV
1/2	0.5	DATE	REV
5/8	0.625	DATE	REV
3/4	0.75	DATE	REV
7/8	0.875	DATE	REV
1	1.0	DATE	REV

5861	11-4	2004	C	ADDED JUMPER BETWEEN TB2-4&7; K2-86 WAS CONNECTED TO TB2-6.	GA		
5538	05-8	2003	B	ADDED OVERSPEED BOARD	GA		
1464	02-1	2003	A	ADDED TRANSIENT VOLTAGE SUPPRESSOR TO CIRCUIT	LS		